

# Effect of Pulpal Pressure and Immediate or Delayed Dentin Sealing Technique on Microtensile Bond Strength of an Adhesive Resin Cement to Dentin: An *In Vitro* Study

Teeranuch Rujirakanusorn<sup>1,2</sup>, Marisa Sukapattee<sup>3</sup>, Sitthichai Wanachantararak<sup>4</sup>, Aikaterini Kostagianni<sup>5</sup>

<sup>1</sup>Graduate student, Department of Prosthodontics, Faculty of Dentistry, Chiang Mai University, Thailand

<sup>2</sup>Maechan Hospital, Thailand

<sup>3</sup>Department of Prosthodontics, Faculty of Dentistry, Chiang Mai University, Thailand

<sup>4</sup>Department of Oral Biology and Diagnostic Sciences, Chiang Mai University, Thailand

<sup>5</sup>Department of Prosthodontics, Tufts University, School of Dental Medicine, USA

Received: April 9, 2021 • Revised: May 16, 2021 • Accepted: May 17, 2021

Corresponding Author: **Marisa Sukapattee** Assistant Professor, Department of Prosthodontics, Faculty of Dentistry, Chiang Mai University, Chiang Mai 50200, Thailand. (E-mail: [mpanchim@hotmail.com](mailto:mpanchim@hotmail.com))

## Abstract

**Objectives:** To evaluate the effect of pulpal pressure and immediate (IDS) or delayed dentin sealing (DDS) technique on microtensile bond strength ( $\mu$ TBS) of an adhesive resin cement to exposed human dentin.

**Methods:** Fifty extracted human third molars were divided into 2 groups: pulpal and non-pulpal pressure (PP, NP), which represented vital and non-vital tooth. Each group was divided into 5 subgroups: direct restoration (control), DDS technique and 3 IDS techniques, [etch-and-rinse (TE), self-etching (SE) and universal adhesive (U)]. The hydrostatic pressure of 20 cmH<sub>2</sub>O was applied prior to adhesive application in PP groups during the experiment. The self-adhesive resin cement was used to bond a composite disc onto dentin for all groups. Ten small square beams from each group were fabricated and collected for  $\mu$ TBS testing and mode of failure monitoring.

**Results:** All three IDS groups yielded a significantly higher  $\mu$ TBS than control and DDS groups in both pulpal conditions. DDS groups yielded the lowest  $\mu$ TBS. The presence of pulpal pressure caused a significant reduction of  $\mu$ TBS in TE and DDS groups.

**Conclusions:** The IDS technique could produce higher  $\mu$ TBS than the DDS and direct restoration technique in both pulpal conditions.

**Keywords:** pulpal pressure, dental adhesives, immediate dentin sealing

## Introduction

Magne *et al.*<sup>(1-3)</sup> first introduced the immediate dentin sealing (IDS) technique, which seals freshly prepared dentin with dental adhesive to improve the success of indirect bonded restorations; for example inlays, onlays, veneers and other fixed prostheses. The immediate application of dental adhesive after tooth preparation

helps prevent any contamination and compression of decalcified matrix of dentin caused by the cementation of indirect restorations. The dental adhesive also improves bond strength, increases retention, and reduces marginal leakage of the restorations.<sup>(2,4-8)</sup>

The technique of resin coating on dentin after tooth preparation in fixed prosthodontic work was first recom-

mended by Pashley and colleagues<sup>(9)</sup> to prevent micro-leakage during provisional period. Many *in vitro* studies<sup>(2-6,10-12)</sup> also reported that this technique produced high tensile bond strength and improved shear bond strength. However, most bond strength studies<sup>(2,3,5,6)</sup> were done in dry tooth specimens without consideration of pulpal pressure, which produces continuous outward flow of fluid after dentin is exposed in vital tooth.<sup>(13,14)</sup> The slightly positive pressure (approximately 20 cmH<sub>2</sub>O)<sup>(14-17)</sup> in dental pulp generates this flow and resists the invasion of bacteria and its toxin. However, it may interfere the penetration of a dental adhesive into decalcified matrix to form a hybrid layer, resulting in impaired bonding of the restorations.<sup>(18)</sup>

Since the results from literatures of dental adhesive administrative techniques are still inconclusive, little is known about the influence of the presence of pulpal pressure on bond strength of dental adhesives used in immediate dentin sealing technique. This study aimed to evaluate the effect pulpal pressure and immediate or delayed dentin sealing (DDS) technique on microtensile bond strength of resin cement and exposed dentin in extracted human teeth. The three dental adhesive systems used in IDS technique was also investigated.

## Materials and Methods

Fifty sound extracted human third molars were collected under informed consent of each patient. The use of human tissue was approved by the Human Experimentation Committee No. 74/2019. The samples were stored in 0.5% chloramine-T trihydrate solution for 7 days and then in distilled water grade 3 at 4°C until required, according to ISO/TS 11405/015 specification.<sup>(19)</sup>

The whole tooth was embedded in epoxy resin with buccal surface facing upward. The root was sectioned off at 1 mm beneath cemento-enamel junction (CEJ). The remaining pulp tissue was removed through the opening by forceps. The buccal surface was removed 1.5 mm to expose the dentin using a slow-speed diamond saw (Isomet<sup>®</sup> 1000, Buehler, Lake Bluff, IL, USA) with water cooling. The cut surface was polished with 400-grit silicon carbide paper under running water for 30 seconds to create a smear layer.

The specimens were randomly assigned into two groups equally. In the presence of pulpal pressure (PP) group, a hydrostatic pressure device, composed of a plexi-

glass plate (15 mm×15 mm×5 mm) with an 18-gauge stainless steel needle stuck through, was attached to the tooth specimen. The pulpal chamber and the whole system were filled with distilled water and hydrostatic pressure was set at 20 cmH<sub>2</sub>O throughout the experiment. Care was taken to avoid air bubbles in the system. The specimen of non-pulpal pressure (NP) group was left unconnected.

Each of the pulpal condition groups were divided further into five subgroups: direct restoration as control (con), delayed dentin sealing technique (DDS), immediate dentin sealing technique, which includes three-steps etch-and-rinse (TE), two-steps self-etch (SE), and universal adhesive (U).

One of the three dental adhesive systems (TE, SE, and U) was randomly applied to the freshly prepared dentin surface as IDS technique, according to the manufacture's direction. In the TE groups, the dentin was treated with 37% phosphoric acid for 15 seconds followed by rinsing with running water for 20 seconds and air-dried. The primer was applied on the etched surface with micro-brush for 15 seconds and gently blown with air. The surface was painted with a bonding agent, followed by gentle airflow and light activated for 30 seconds. In the SE groups, the primer was painted on dentin for 20 seconds and air blown. The bonding agent was applied, thinned with gently air blown and light activated for 20 seconds. The U groups consisted of an application of one bottle adhesive on the dentin surface for 20 seconds, followed by air-drying and light activated for 20 seconds.

Provisional cement (Temp-Bond™ NE, KERR, Brea, CA, USA) was used to bond an acrylic disc (4 mm diameter, 4 mm thick) onto the prepared dentin surface of DDS, TE, SE and U subgroups under a constant load of 10 N until completely set. The specimen was stored in distilled water for 1 week. The acrylic disc and provisional cement were removed and the dentin surface was cleaned using spoon excavator and a rubber cup containing water slurry pumice with a slow speed contra-angle hand-piece. In the control group, direct restoration technique, the prepared dentin surface was exposed only to resin cement.

In the permanent cementation process, a composite disc (4 mm diameter, 4 mm thick) was cemented on dentin surface with resin cement (RelyX™ U200, 3M ESPE, Minneapolis, MN, USA) in all subgroups under a constant load of 10 N, any excess cement was removed by a mi-

cro-brush before applying light activation for 20 seconds. The specimen was stored in distilled water at 37°C for 24 hours before microtensile bond strength testing.

Four vertical grooves and four horizontal grooves 1 mm apart were sectioned perpendicularly to the bonding surface using a slow speed cutting machine to produce small square beams. Two beams were selected from each specimen, which made up ten beams for each subgroup for  $\mu$ TBS test. Each beam was attached to the gripping device of the universal testing machine (Instron Corp., Canton, MA, USA) using cyanoacrylate adhesive (Model repair II blue, Tokyo, Japan). The tensile load was applied with a constant crosshead speed of 0.5 mm/min until failure. The actual bonded area (mm<sup>2</sup>) of each tested beam was measured with a pincer-type digital caliper. The microtensile bond strength (MPa) was calculated from a maximum force (N) divided by bonded area (mm<sup>2</sup>). The data was analyzed using 2-way ANOVA to investigate the interaction between the presence of pulpal pressure and the bonding techniques and Tukey multiple comparison.

The failure modes of all specimens were analyzed using a stereomicroscope system and digital camera (SZX7 & SZ2-ILST LED illuminator stand & E-330 & Olympus, Tokyo, Japan) at 50x magnification and were then classified into adhesive failure (A), cohesive failure (C) or mixed failure (M). One sample from each group was cut longitudinally through the bonding interface. The cut surface was decalcified by immersing in 6 mol/L of HCl solution for 25 seconds and followed by deproteinizing with 6% NaOCl solution for 3 minutes. All debris was cleaned from surface using ultrasonic cleanser. The specimen was processed for examination in more detail under scanning electron microscope (SEM) (JSM-5910LV, Joel, Peabody, MA, USA).

## Results

Two-way ANOVA statistical analysis suggested that there was a significant interaction ( $p < 0.05$ ) among the bonding techniques and the presence of pulpal pressure. Therefore, the simple main effect analysis of the two main factors was carried out to examine the effect of one main effect at different levels of the other main effect. Overall,  $\mu$ TBS of non-pulpal pressure group (25.76±4.93) was greater ( $p < 0.05$ ) than that of present pulpal pressure group (23.94±5.18 MPa). Within the bonding techniques, the DDS group showed the lowest  $\mu$ TBS (18.09.19±3.79)

followed by control group (21.57±2.42). All IDS groups (TE, SE, U) showed significantly higher  $\mu$ TBS than DDS and control groups. Within the IDS group,  $\mu$ TBS in TE group (29.74±2.52) was the highest, but not significantly different from those in SE and U groups (27.89±1.37, 27.17±2.92). The microtensile bond strength (means and standard deviation) from all groups is presented in Table 1.

**Table 1:** Mean±SD of microtensile bond strengths obtained from 5 bonding techniques under non-pulpal pressure and presence of pulpal pressure conditions.

Bonding technique	n	Mean±SD (MPa)	
		Non-pulpal pressure (NP)	Presence of pulpal pressure (PP)
Control (con)	10	21.98±2.27 <sup>b</sup>	21.15±2.62 <sup>b</sup>
Delayed dentin sealing technique (DDS)	10	20.19±4.09 <sup>b</sup>	15.99±1.96 <sup>a</sup>
IDS technique with Optibond™ FL (TE)	10	31.25±2.64 <sup>d</sup>	28.67±1.09 <sup>c</sup>
IDS technique with Clearfil™ SE bond (SE)	10	27.85±1.61 <sup>c</sup>	27.57±1.27 <sup>c</sup>
IDS technique with 3M™ Single bond universal (U)	10	27.55±2.91 <sup>c</sup>	26.80±3.03 <sup>c</sup>

Different letters indicated the significant different ( $p < 0.05$ )

A closer examination of non-pulpal pressure groups, all IDS-NP groups showed a significantly higher  $\mu$ TBS than DDS-NP and control-NP groups. The TE-NP group (31.25±2.64) had a significantly higher  $\mu$ TBS value ( $p < 0.05$ ) than SE-NP and U-NP groups (27.85±1.61, 27.55±2.91). However, there was no significant difference among control-NP (21.98±2.27) and DDS-NP (20.19±4.09) groups.

Under the present pulpal pressure condition, the  $\mu$ TBS of all IDS-PP groups were significantly higher than those of DDS-PP and control-PP groups. The control-PP (21.15±2.62) group had a significantly higher  $\mu$ TBS ( $p < 0.05$ ) than DDS-PP (15.99±1.96) group, while there was no significant difference among TE-PP (28.67±1.09), SE-PP (27.57±1.27) and U-PP (26.80±3.03) groups. In a comparison between non-pulpal pressure and present pulpal pressure condition, the  $\mu$ TBS of TE-PP or DDS-PP group (28.67±1.09, 15.99±1.96) was significantly lower than TE-NP or DDS-NP (31.25±2.64, 20.19±4.09) with  $p < 0.05$ .

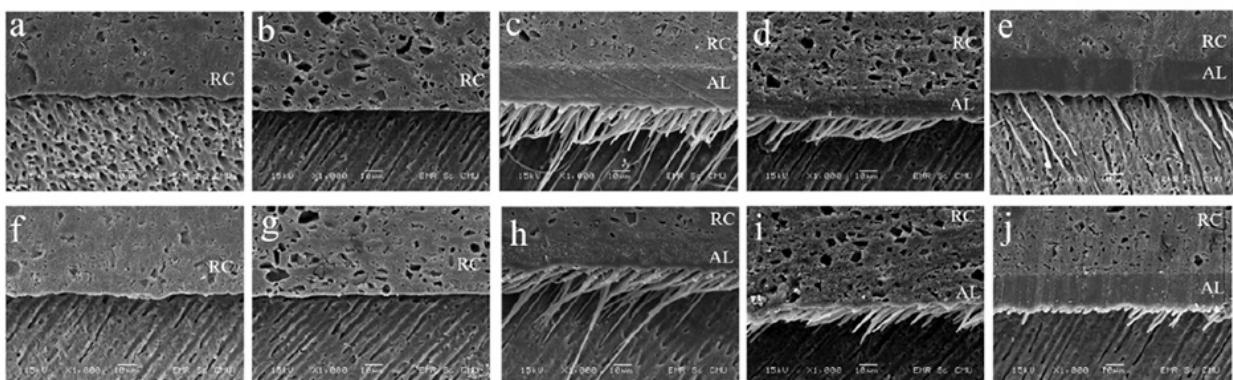
Under stereo-microscope examination, the percentage of failure mode of each group under both pulpal conditions were compared. Mixed failure was found in a majority of IDS groups (75% in TE, 70% in SE, 70% in U), while DDS and control groups had high proportion in adhesive failure (65%, 60%) (Table 2). SEM images showed complete adhesive layer at the bonding interface in all IDS groups, but not in DDS and control. For both pulpal conditions, TE and U groups showed thicker adhesive layer, whereas TE and SE groups presented longer resin tag (Figure 1).

### Discussion

IDS technique provided higher  $\mu$ TBS than DDS and direct restoration techniques in both pulpal pressure conditions in this study, which was consistent to other studies.<sup>(2-6,20)</sup> The results indicated that immediate application of dental adhesive on freshly prepared dentin, IDS technique, has more advantages than application after provisional cementation (DDS technique) or no adhesive application (direct restoration). IDS technique not only

**Table 2:** Percentage of failure mode.

Group	% Failure Mode		
	Adhesive	Mixed	Cohesive
<b>Control (con)</b>			
Non-pulpal pressure	60	40	0
Presence of pulpal pressure	70	30	0
<b>Delayed dentin sealing technique (DDS)</b>			
Non-pulpal pressure	60	40	0
Presence of pulpal pressure	80	20	0
<b>IDS technique with Optibond™ FL (TE)</b>			
Non-pulpal pressure	10	80	10
Presence of pulpal pressure	20	70	10
<b>IDS technique with Clearfil™ SE bond (SE)</b>			
Non-pulpal pressure	20	70	10
Presence of pulpal pressure	30	70	0
<b>IDS technique with 3M™ Single bond universal (U)</b>			
Non-pulpal pressure	20	70	10
Presence of pulpal pressure	30	70	0



**Figure 1:** SEM micrograph at 1,000x magnification of resin cement-dentin interface under non-pulpal pressure condition (a-e) and presence of pulpal pressure condition (f-j); a. con-NP sample b. DDS-NP sample c. TE-NP sample d. SE-NP sample e. U-NP sample f. control-PP sample g. DDS-PP sample h. TE-PP sample i. SE-PP sample j. U-PP sample Abbreviation: RC: resin cement, AL: adhesive layer, con: control, DDS: Delayed dentin sealing, TE: IDS technique with Optibond™ FL, SE: IDS technique with Clearfil™ SE bond, U: IDS technique with 3M™ Single bond universal, NP: Non-pulpal pressure, PP: Presence of pulpal pressure



improve bond strength of permanent resin cement, but also has less post-operative dentin sensitivity.<sup>(19,21)</sup>

Contamination of provisional cement after applying immediate dentin sealing seemed to have little effect on bond strength of resin cement.<sup>(6)</sup> Magne and colleagues<sup>(3)</sup> suggested that oxygen-inhibited layer of methacrylate group in dental adhesive remained active up to 12 weeks and could interact chemically with permanent luting cement even though it was contaminated by provisional cementation.<sup>(22)</sup>

The reduction of the  $\mu$ TBS in every group with simulated pulpal pressure suggests that outward flow of dentinal fluid interfered with the bonding of adhesive to a certain degree.<sup>(18,23-25)</sup> DDS-PP and TE-PP groups had significantly lower  $\mu$ TBS than DDS-NP and TE-NP groups. Although self-adhesive resin cement required some water to release hydrogen ion from acidic monomer to demineralize dentin<sup>(26)</sup>, the outward fluid flow seemed to dilute acidic monomer<sup>(27,28)</sup>, resulting in an impaired smear layer and lower capacity of resin cement infiltration.<sup>(29)</sup> Moreover, the dentin surface in DDS group was contaminated from provisional cement<sup>(6,30,31)</sup>, which affected the  $\mu$ TBS.

In the etch-and-rinse adhesive system, TE group, although  $\mu$ TBS of TE-PP was significantly lower than TE-NP, they still showed the highest values in both pulpal conditions. Strong phosphoric acid used in TE group could remove smear layer and smear plug more completely than mild acidic monomer in SE and U groups.<sup>(32)</sup> In non-pulpal condition, hydrophilic primer could re-expand the collapsed demineralized collagen matrix and allowed hydrophobic adhesive to diffuse in and form a complete hybrid layer effectively. The reduction of  $\mu$ TBS suggests that the penetration of primer and adhesive was retarded in this study, which contrasted to many studies.<sup>(14,33)</sup>

Means  $\mu$ TBS in SE and U groups were compared in both pulpal conditions, indicated that pulpal pressure did not affect the bond strength. Acidic monomer of these two bonding systems has advantages over phosphoric acid in TE group, since water rinsing was not required.<sup>(34)</sup> A 10-methacryloyldecyl dihydrogen phosphate (MDP), as acidic monomer, interacts with hydroxyapatite in dentin and enamel chemically, which allows adhesive to form stronger phase nano-layer at bonding interface and results in high bond stability and high mechanical strength.<sup>(35)</sup>

Moreover, as a mild acid, it partially removes smear layer and leaves the deeper part of smear plug in the tubules, which limits dentin permeability.<sup>(36)</sup> As a result, bonding adhesive is allowed to penetrate the demineralized layer effectively under pulpal pressure condition<sup>(35)</sup> This study ascertained that no more advantage was found when polyalkenoic acid copolymer was added to 3M™ Single bond universal in U group than in SE group. Polyalkenoic acid is claimed to increase hydrophilicity of the adhesive, which improves bonding stability between dentin and the adhesive.<sup>(37,38)</sup> On the contrary, some studies<sup>(39,40)</sup> have disputed that this copolymer might compete MDP in binding the hydroxyapatite and then prevent monomer to approach the polymerization site due to its high molecular weight.

Under simulated pulpal pressure condition, the IDS technique, using three dental adhesives, showed a higher  $\mu$ TBS than direct restoration, which corresponded to the other studies.<sup>(10,36)</sup> The result of this study supported the use of IDS technique in vital tooth in order to reduce dentin sensitivity during provisional cementation period and also to increase bond strength of luting cement. Among three adhesive systems used in the IDS technique, although they yield a comparable bond strength, self-etch adhesive and universal bonding system have advantages over etch-and-rinse system since they have less technique sensitive and produce less post-operative sensitivity.<sup>(32)</sup> On the other hand, without pulpal pressure in non-vital tooth, the etch-and-rinse adhesive system used in IDS technique provided the highest  $\mu$ TBS.

## Conclusions

All immediate dentin sealing techniques produced higher  $\mu$ TBS than delayed dentin sealing technique while etch-and-rinse system yielded the highest  $\mu$ TBS, although it was affected by pulpal pressure. The  $\mu$ TBS obtained when self-etch or universal adhesive system was used was not affected by the presence of pulpal pressure.

## Acknowledgement

This research was supported by Faculty of Dentistry, Chiang Mai University and the Science and Technology Service Center, Faculty of Science, Chiang Mai University.

## References

- Magne P. Immediate dentin sealing: a fundamental procedure for indirect bonded restorations. *Journal of esthetic and restorative dentistry : official publication of the American Academy of Esthetic Dentistry*. 2005; 17(3): 144-154.
- Magne P, Kim TH, Cascione D, Donovan TE. Immediate dentin sealing improves bond strength of indirect restorations. *J Prosthet Dent* 2005; 94(6): 511-519.
- Magne P, So WS, Cascione D. Immediate dentin sealing supports delayed restoration placement. *J Prosthet Dent* 2007; 98(3): 166-174.
- Duarte S, Jr., de Freitas CR, Saad JR, Sadan A. The effect of immediate dentin sealing on the marginal adaptation and bond strengths of total-etch and self-etch adhesives. *J Prosthet Dent* 2009; 102(1):1-9.
- Hironaka NGL, Ubaldini ALM, Sato F, Giannini M, Terada RSS, Pascotto RC. Influence of immediate dentin sealing and interim cementation on the adhesion of indirect restorations with dual-polymerizing resin cement. *J Prosthet Dent* 2018; 119(4): 678.e1-.e8.
- Brigagao VC, Barreto LFD, Goncalves KAS, et al. Effect of interim cement application on bond strength between resin cements and dentin: Immediate and delayed dentin sealing. *J Prosthet Dent* 2017; 117(6): 792-798.
- Sailer I, Oendra AE, Stawarczyk B, Hammerle CH. The effects of desensitizing resin, resin sealing, and provisional cement on the bond strength of dentin luted with self-adhesive and conventional resin cements. *J Prosthet Dent* 2012; 107(4): 252-260.
- Giannini M, Takagaki T, Bacelar-SÁ R, et al. Influence of resin coating on bond strength of self-adhesive resin cements to dentin. *Dent Mater J* 2015; 34:822-827.
- Pashley EL, Comer RW, Simpson MD, Horner JA, Pashley DH, Caughman WF. Dentin permeability: sealing the dentin in crown preparations. *Oper Dent* 1992; 17(1): 13-20.
- Santana VB, de Alexandre RS, Rodrigues JA, Ely C, Reis AF. Effects of immediate dentin sealing and pulpal pressure on resin cement bond strength and nanoleakage. *Oper Dent* 2016; 41(2): 189-199.
- Choi YS, Cho IH. An effect of immediate dentin sealing on the shear bond strength of resin cement to porcelain restoration. *J Adv Prosthodont* 2010; 2(2): 39-45.
- van den Breemer CR, Ozcan M, Pols MR, Postema AR, Cune MS, Gresnigt MM. Adhesion of resin cement to dentin: effects of adhesive promoters, immediate dentin sealing strategies, and surface conditioning. *Int J Esthet Dent* 2019; 14(1): 52-63.
- Elgalaid TO, Youngson CC, McHugh S, Hall AF, Creanor SL, Foye RH. *In vitro* dentine permeability: the relative effect of a dentine bonding agent on crown preparations. *J Dent* 2004; 32(5): 413-21.
- Sauro S, Pashley DH, Montanari M, et al. Effect of simulated pulpal pressure on dentin permeability and adhesion of self-etch adhesives. *Dent Mater* 2007; 23(6): 705-713.
- Hashimoto M, Ito S, Tay FR, Svizero NR, Sano H, Kaga M, et al. Fluid movement across the resin-dentin interface during and after bonding. *J Dent Res* 2004; 83(11): 843-848.
- Hashimoto M, Tay FR, Sano H, Kaga M, Pashley DH. Diffusion-induced water movement within resin-dentin bonds during bonding. *J Biomedical Mater Res B Appl Biomater* 2006; 79(2): 453-458.
- Feitosa VP, Correr AB, Correr-Sobrinho L, Sinhoreti MA. Effect of a new method to simulate pulpal pressure on bond strength and nanoleakage of dental adhesives to dentin. *J Adhes Dent* 2012; 14(6): 517-524.
- Pereira PN, Okuda M, Sano H, Yoshikawa T, Burrow MF, Tagami J. Effect of intrinsic wetness and regional difference on dentin bond strength. *Dent Mater* 1999; 15(1): 46-53.
- Dentistry. Testing of adhesion to tooth structure. *ISO TS 11405* 2015; 3:12.
- Qanungo A, Aras MA, Chitre V, Mysore A, Amin B, Daswani SR. Immediate dentin sealing for indirect bonded restorations. *J Prosthodont Res* 2016; 60(4): 240-249.
- Kumar PS, Vasunni GK, Krishnan D. Effect of immediate dentin sealing in prevention of post cementation hypersensitivity in fullcoverage restorations. *J Appl Dent Med Sci* 2015; 14(5): 80-84.
- Papacchini F, Dall'Oca S, Chieffi N, et al. Composite-to-composite microtensile bond strength in the repair of a microfilled hybrid resin: effect of surface treatment and oxygen inhibition. *J Adhes Dent* 2007; 9(1): 25-31.
- Prati C, Pashley DH, Montanari G. Hydrostatic intrapulpal pressure and bond strength of bonding systems. *Dent Mater* 1991; 7(1): 54-58.
- Perdigão J. Dentin bonding as a function of dentin structure. *Dent Clin North Am* 2002; 46(2): 277-301.
- Toledano M, Osorio R, Ceballos L, et al. Microtensile bond strength of several adhesive systems to different dentin depths. *Am J Dent* 2003; 16(5): 292-298.
- Hiraishi N, Nishiyama N, Ikemura K, et al. Water concentration in self-etching primers affects their aggressiveness and bonding efficacy to dentin. *J Dent Res* 2005; 84(7): 653-658.
- Hiraishi N, Yiu CK, King NM, Tay FR. Effect of pulpal pressure on the microtensile bond strength of luting resin cements to human dentin. *Dent Mater* 2009; 25(1): 58-66.
- Bacchi A, Abuna G, Babbar A, Sinhoreti MA, Feitosa VP. Influence of 3-month simulated pulpal pressure on the microtensile bond strength of simplified resin luting systems. *J Adhes Dent* 2015; 17(3): 265-271.
- Frankenberger R, Lohbauer U, Taschner M, Petschelt A, Nikolaenko SA. Adhesive luting revisited: influence of adhesive, temporary cement, cavity cleaning, and curing mode on internal dentin bond strength. *J Adhes Dent* 2007; 9(2): 269-273.

30. Takimoto M, Ishii R, Iino M, *et al.* Influence of temporary cement contamination on the surface free energy and dentine bond strength of self-adhesive cements. *J Dent* 2012; 40(2): 131-138.
31. Porntharukchareon A, Sukapattee M, Rungsiyakull P. Effect of residual eugenol from temporary cement after various cleansing methods in different time on shear bond strength of self-etch adhesive resin cement. *CM Dent J* 2020; 41(3): 75-87.
32. Van Meerbeek B, De Munck J, *et al.* Buonocore memorial lecture. Adhesion to enamel and dentin: current status and future challenges. *Oper Dent* 2003; 28(3): 215-235.
33. Sauro S, Mannocci F, Toledano M, Osorio R, Thompson I, Watson TF. Influence of the hydrostatic pulpal pressure on droplets formation in current etch-and-rinse and self-etch adhesives: A video rate/TSM microscopy and fluid filtration study. *Dent Mater* 2009; 25(11): 1392-1402.
34. Tay FR, Pashley DH. Aggressiveness of contemporary self-etching systems: I: Depth of penetration beyond dentin smear layers. *Dent Mater* 2001; 17(4): 296-308.
35. Yoshida Y, Yoshihara K, Nagaoka N, *et al.* Self-assembled Nano-layering at the Adhesive interface. *J Dent Res* 2012; 91(4): 376-381.
36. Hebling J, Castro FL, Costa CA. Adhesive performance of dentin bonding agents applied *in vivo* and *in vitro*. Effect of intrapulpal pressure and dentin depth. *J Biomedical Mater Res B Appl Biomater* 2007; 83(2): 295-303.
37. Lin A, McIntyre NS, Davidson RD. Studies on the adhesion of glass-ionomer cements to dentin. *J Dent Res* 1992; 71(11): 1836-1841.
38. Perdigão J, Sezinando A, Monteiro PC. Laboratory bonding ability of a multi-purpose dentin adhesive. *Am J Dent* 2012; 25(3): 153-158.
39. Yoshihara K, Yoshida Y, Hayakawa S, *et al.* Nanolayering of phosphoric acid ester monomer on enamel and dentin. *Acta Biomater* 2011; 7(8): 3187-3195.
40. Muñoz MA, Luque I, Hass V, Reis A, Loguercio AD, Bombarda NH. Immediate bonding properties of universal adhesives to dentine. *J Dent* 2013; 41(5): 404-411.